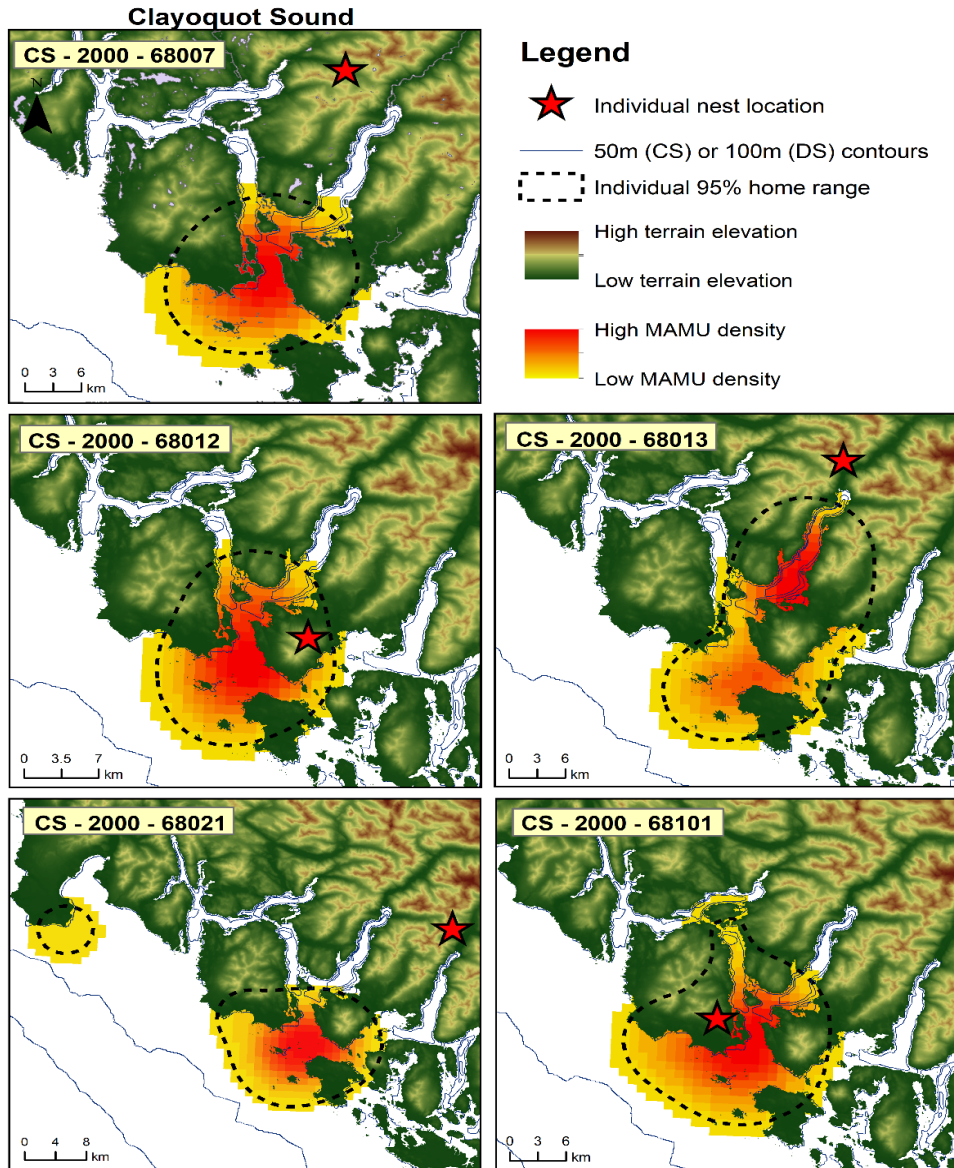


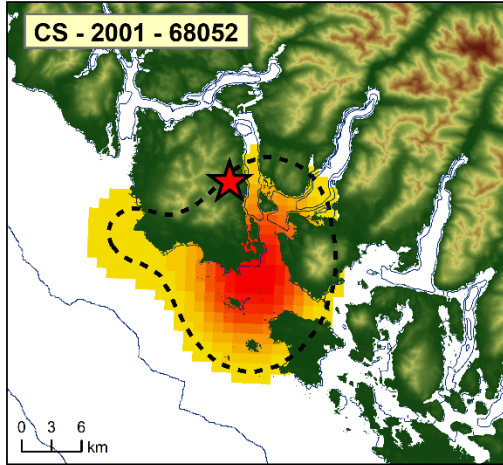
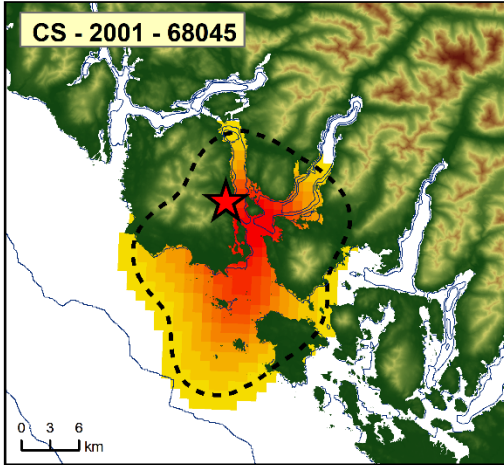
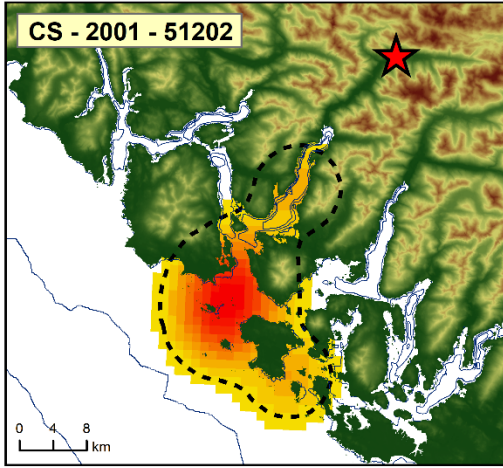
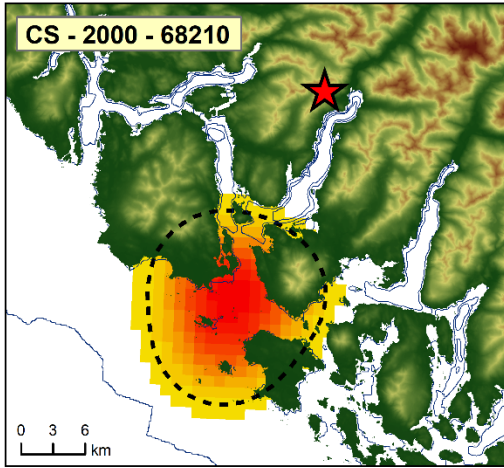
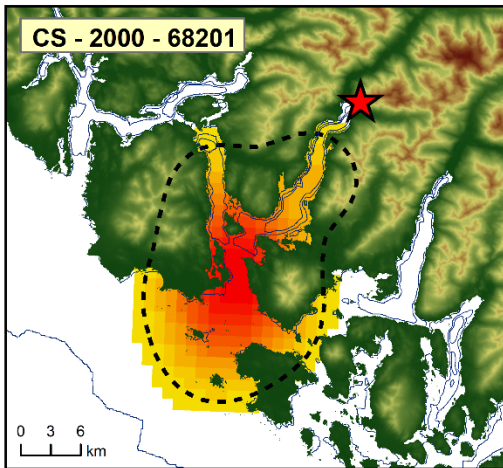
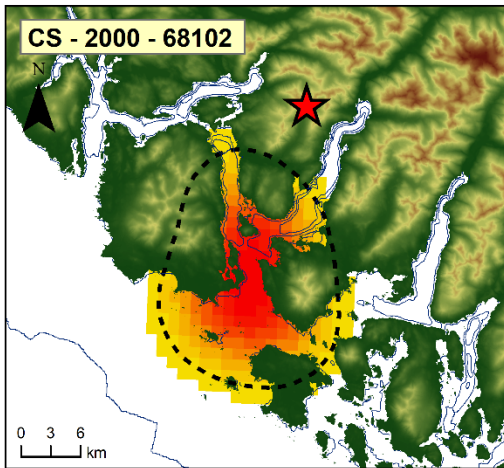
APPENDIX 1

Title: The influence of Breeding Status and Nest Site Locations on Marine Habitat Use by Marbled Murrelets

**Figs.** Individual nest locations, utilization distribution (UD) maps, and 95% home ranges for VHF radio-tagged Marbled Murrelets captured at Clayoquot Sound (CS) or Desolation Sound (DS). Maps are split by site, year and individual band suffix number.

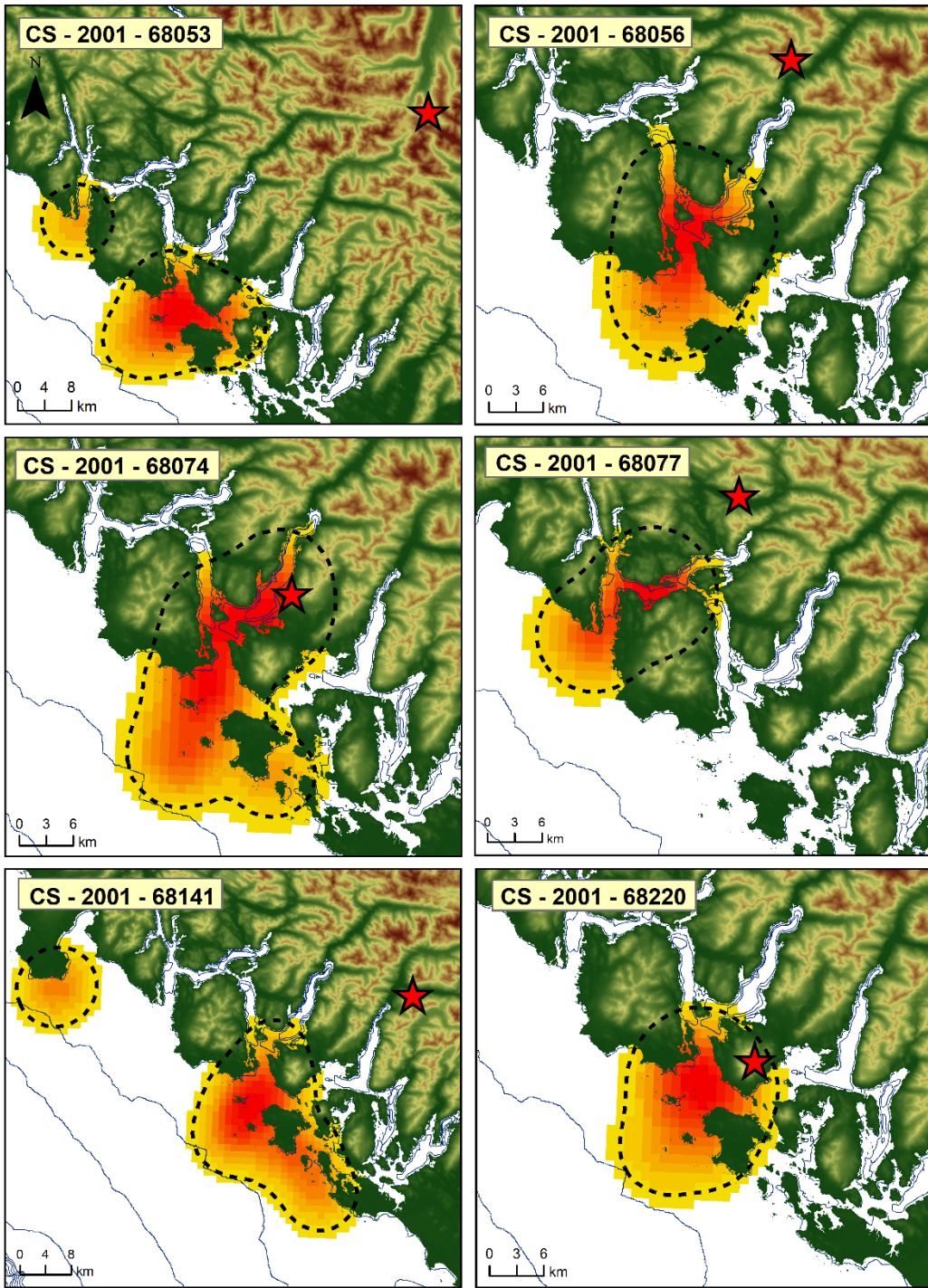


Data source: Centre for Wildlife Ecology, Simon Fraser University. Map created using ESRI ArcMap v10.5.1. Coordinate System: NAD 1983 UTM Zone 10N.

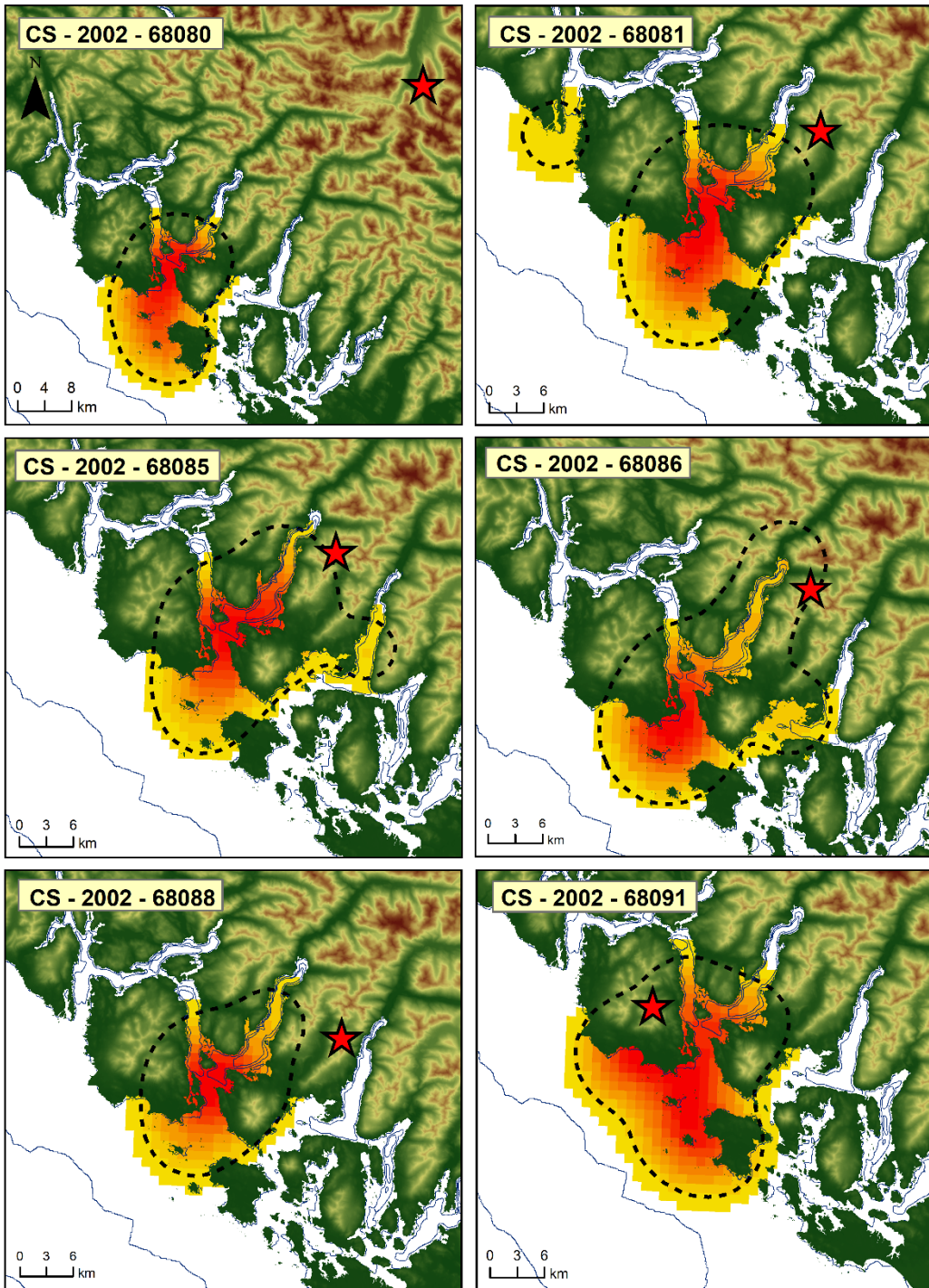


Data source: Centre for Wildlife Ecology, Simon Fraser University. Map created using ESRI ArcMap v10.5.1. Coordinate System: NAD 1983 UTM Zone 10N.



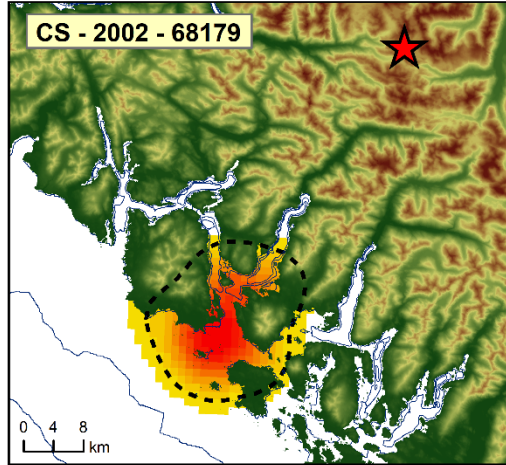
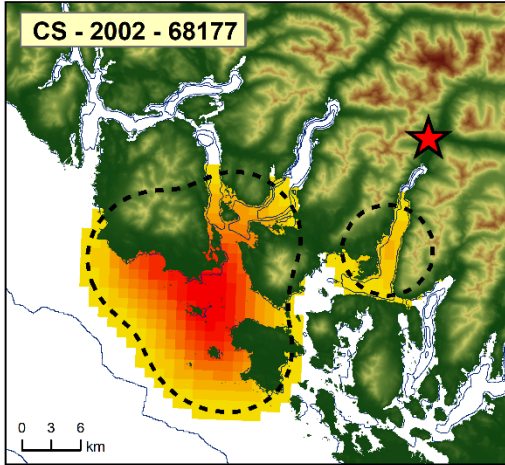
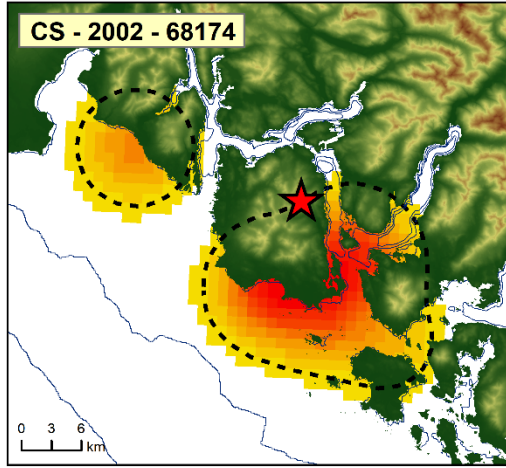
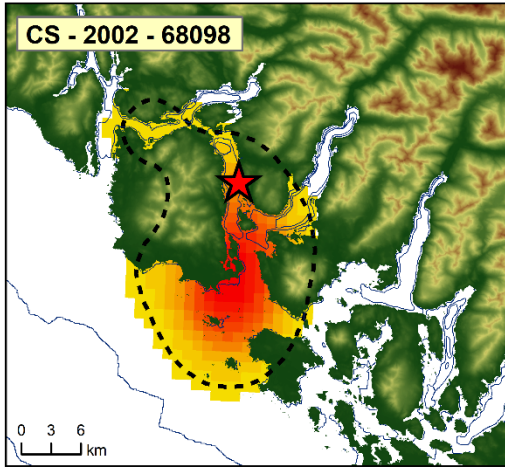
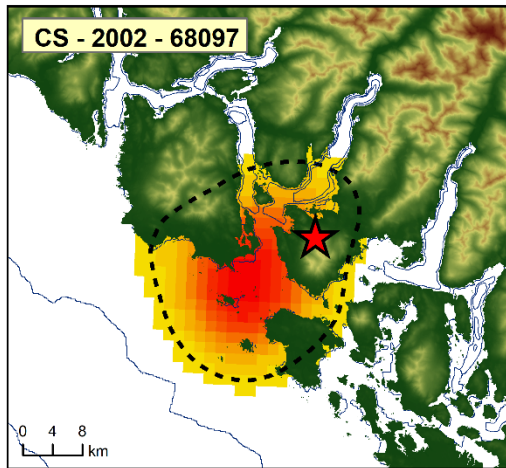
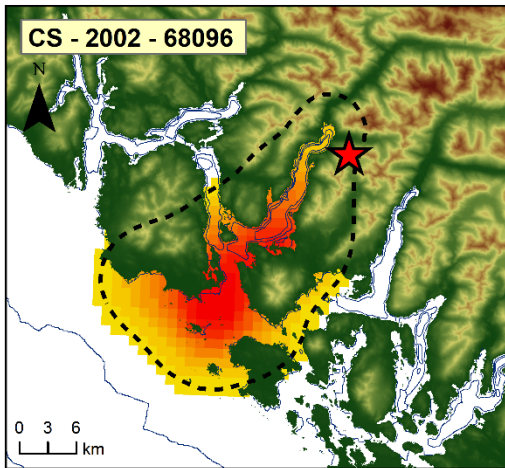


Data source: Centre for Wildlife Ecology, Simon Fraser University. Map created using ESRI ArcMap v10.5.1. Coordinate System: NAD 1983 UTM Zone 10N.

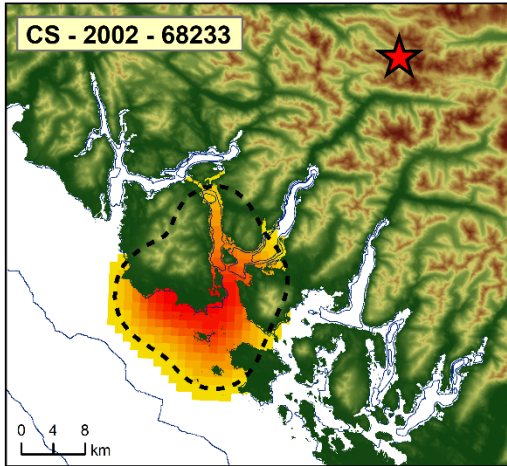
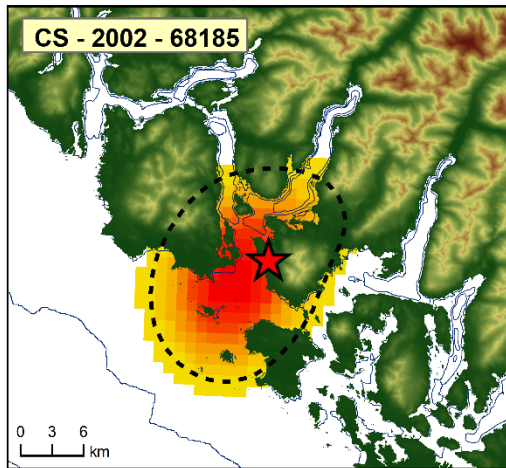
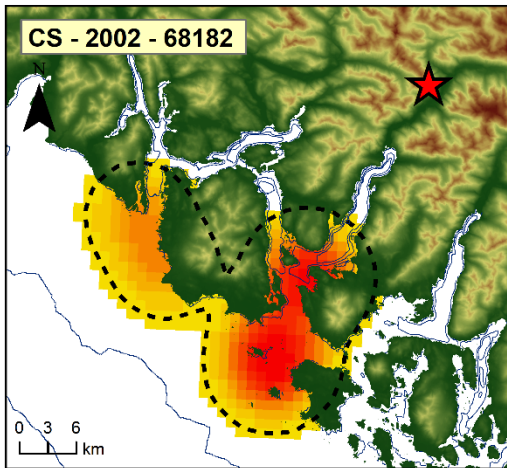


Data source: Centre for Wildlife Ecology, Simon Fraser University. Map created using ESRI ArcMap v10.5.1. Coordinate System: NAD 1983 UTM Zone 10N.





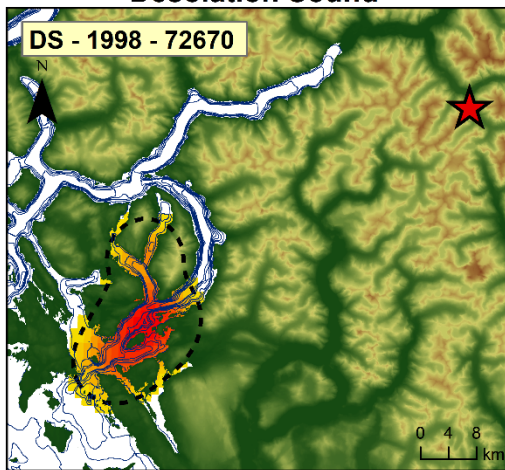
Data source: Centre for Wildlife Ecology, Simon Fraser University. Map created using ESRI ArcMap v10.5.1. Coordinate System: NAD 1983 UTM Zone 10N.



Data source: Centre for Wildlife Ecology, Simon Fraser University. Map created using ESRI ArcMap v10.5.1. Coordinate System: NAD 1983 UTM Zone 10N.

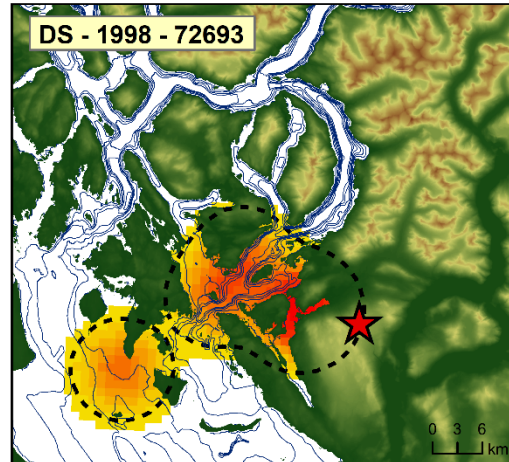
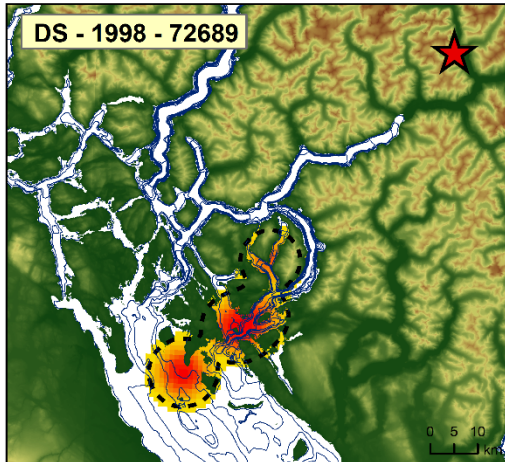
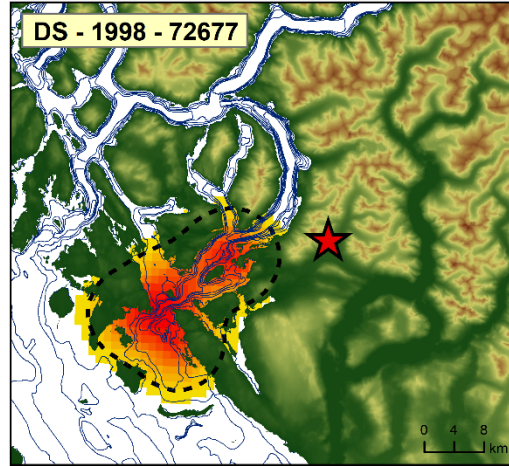
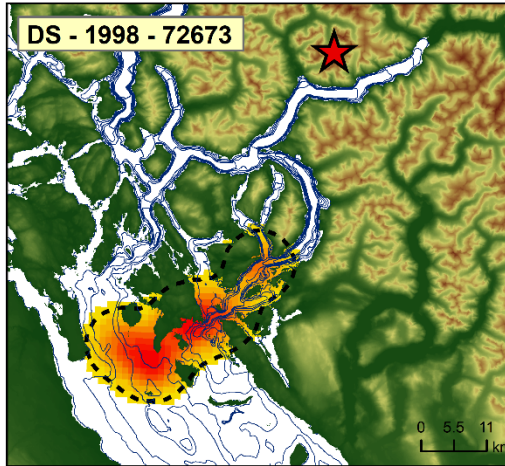


## Desolation Sound

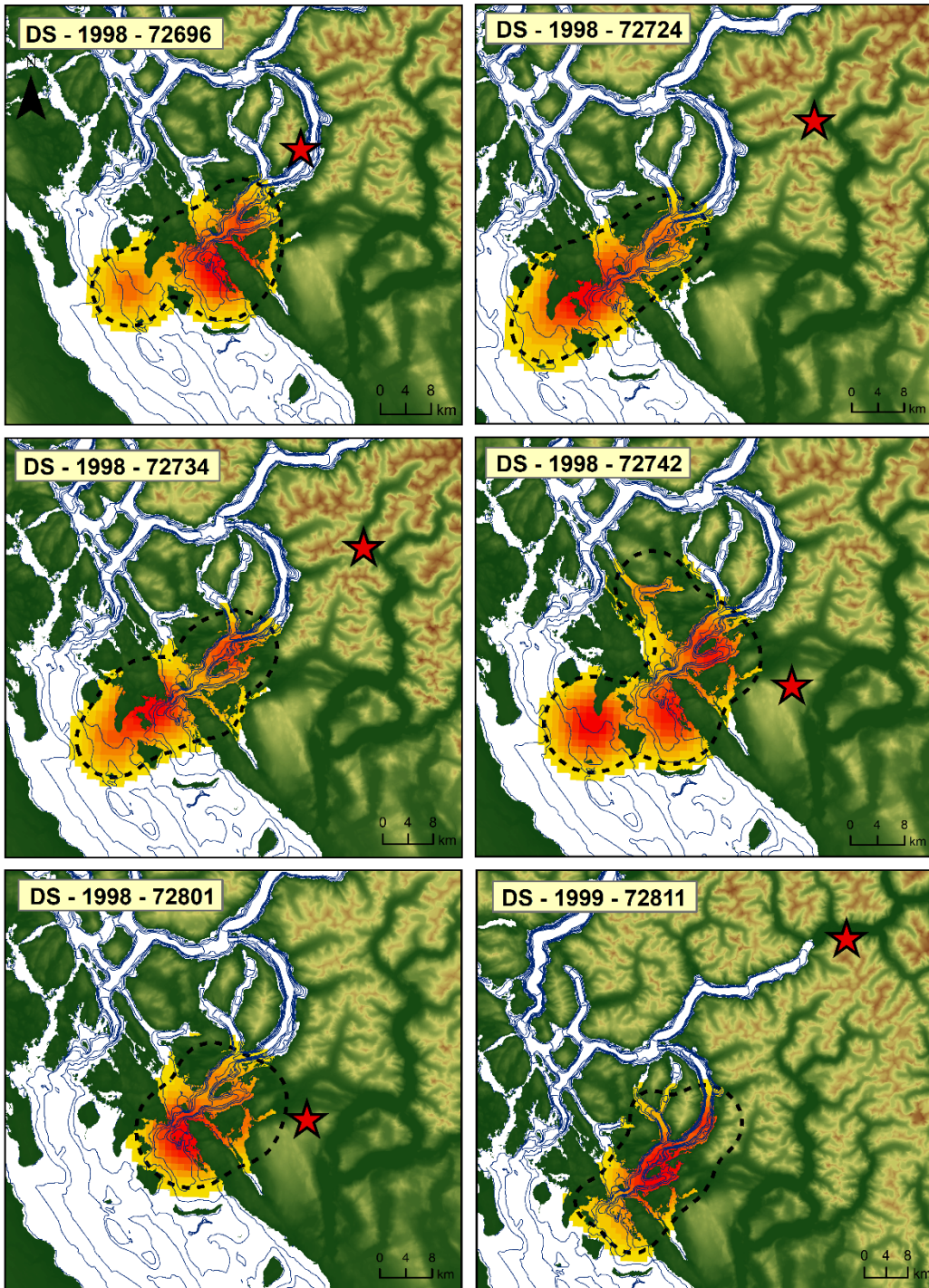


## Legend

- ★ Individual nest location
- 50m (CS) or 100m (DS) contours
- ⋯ Individual 95% home range
- High terrain elevation
- Low terrain elevation
- High MAMU density
- Low MAMU density

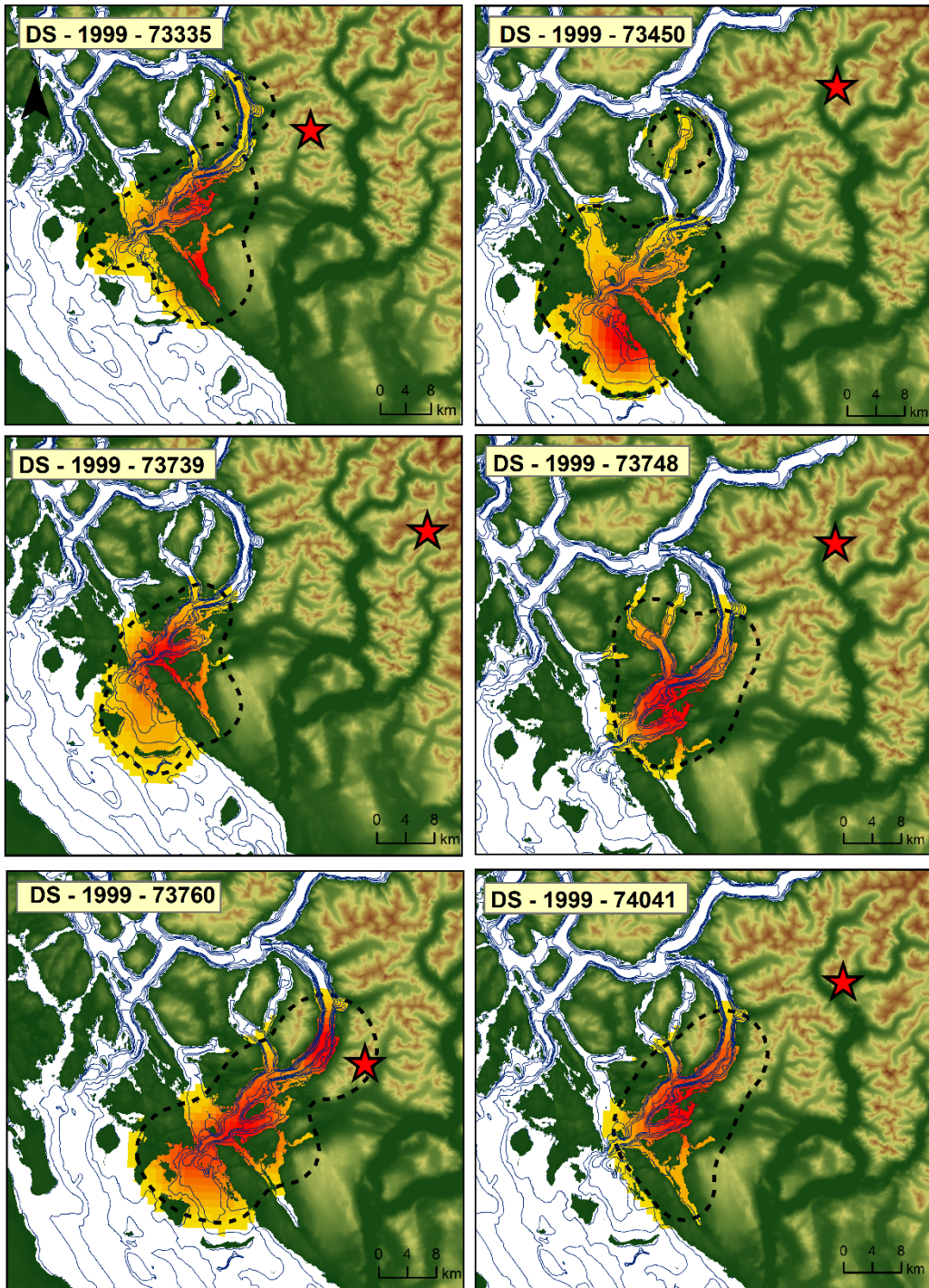


Data source: Centre for Wildlife Ecology, Simon Fraser University. Map created using ESRI ArcMap v10.5.1. Coordinate System: NAD 1983 UTM Zone 10N.



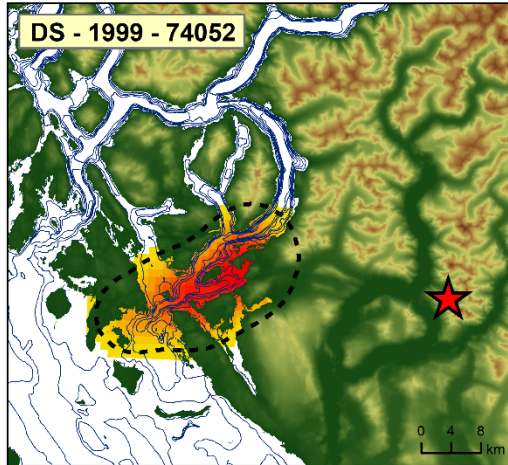
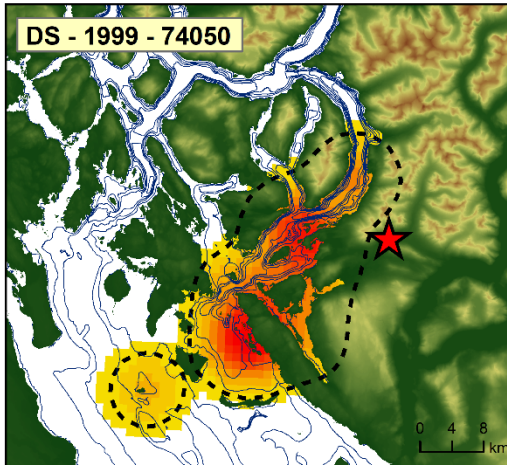
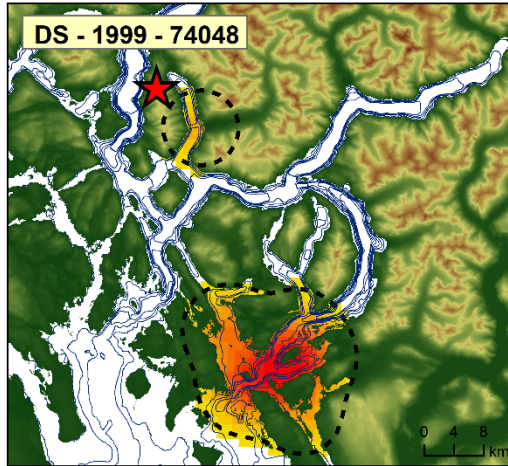
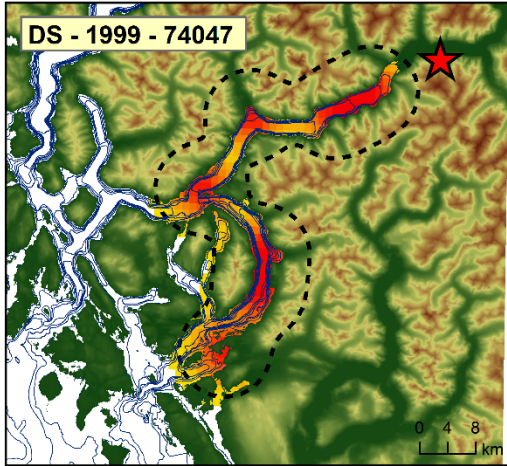
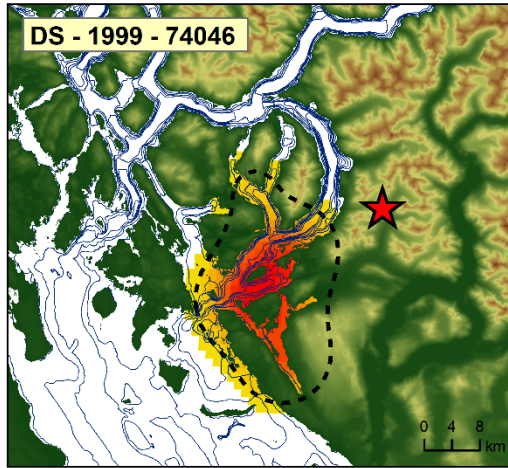
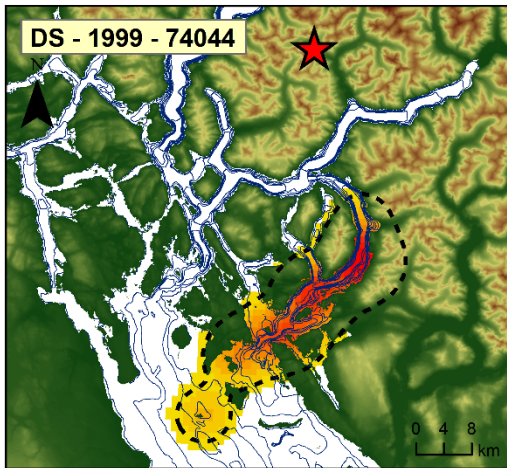
Data source: Centre for Wildlife Ecology, Simon Fraser University. Map created using ESRI ArcMap v10.5.1. Coordinate System: NAD 1983 UTM Zone 10N.





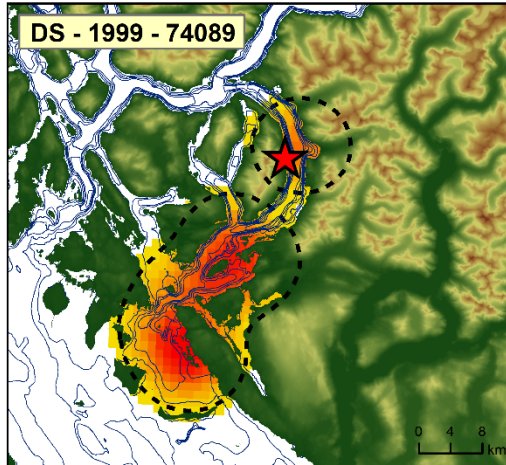
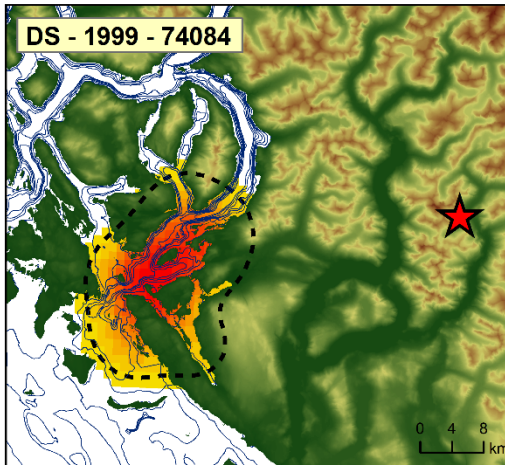
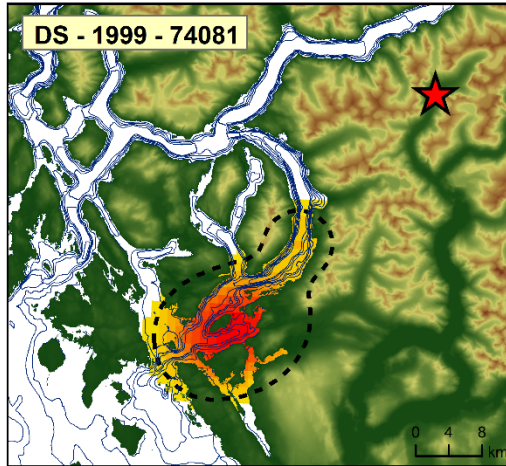
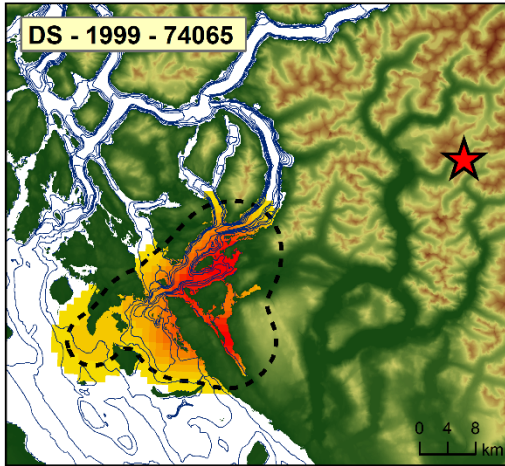
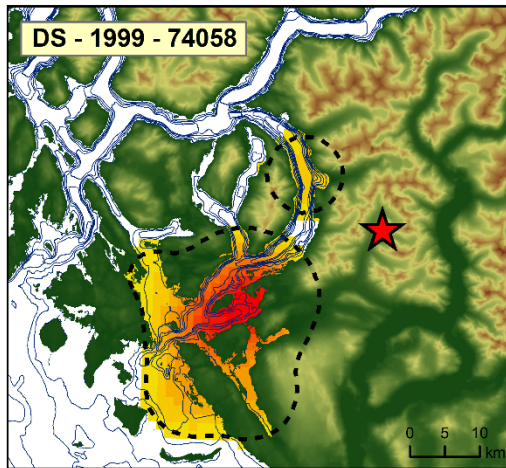
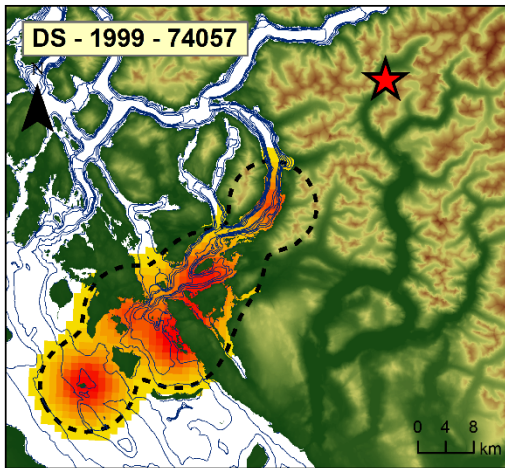
Data source: Centre for Wildlife Ecology, Simon Fraser University. Map created using ESRI ArcMap v10.5.1. Coordinate System: NAD 1983 UTM Zone 10N.





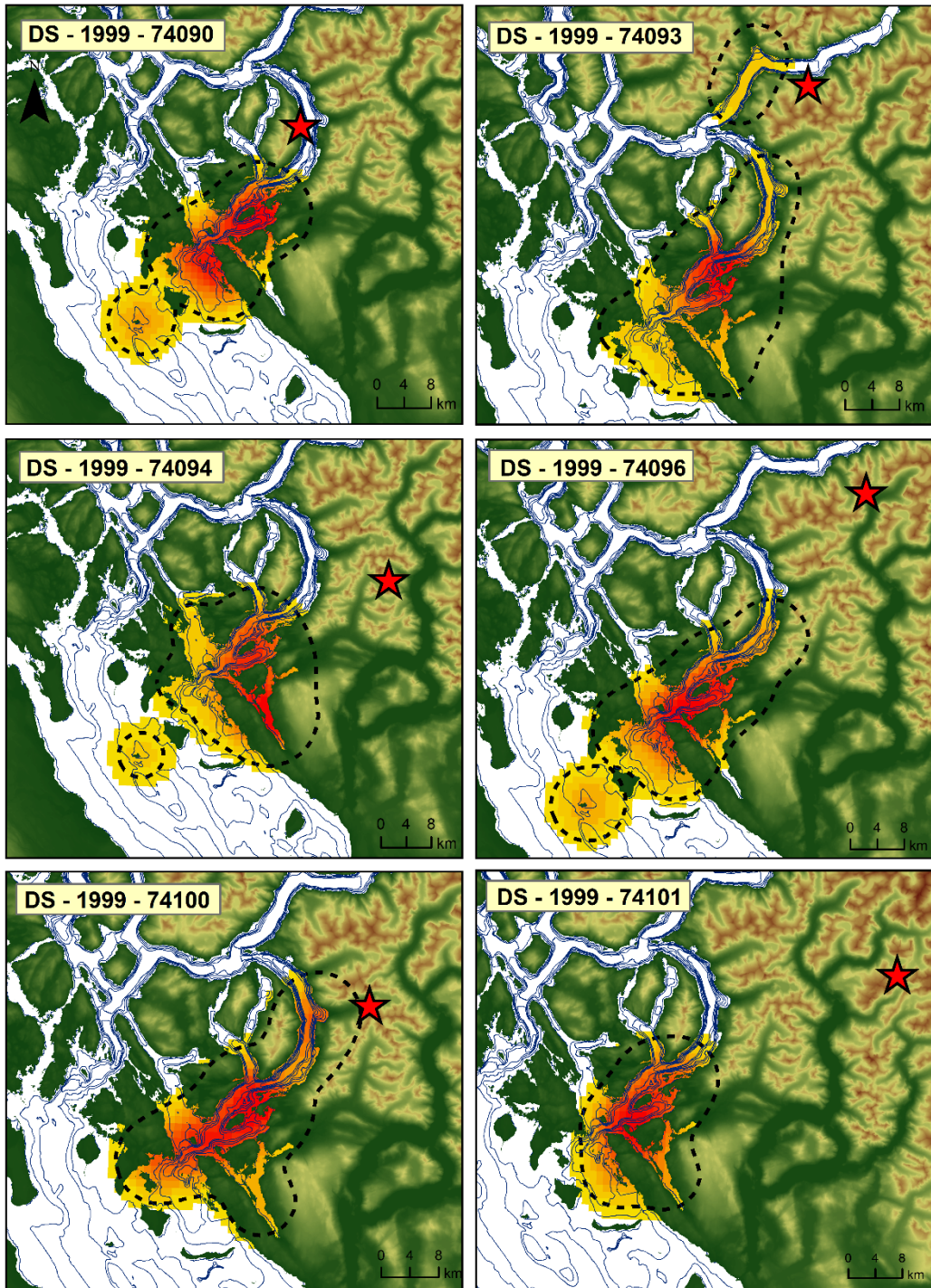
Data source: Centre for Wildlife Ecology, Simon Fraser University. Map created using ESRI ArcMap v10.5.1. Coordinate System: NAD 1983 UTM Zone 10N.





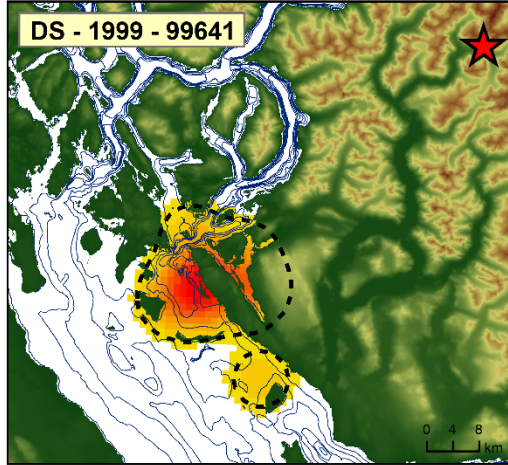
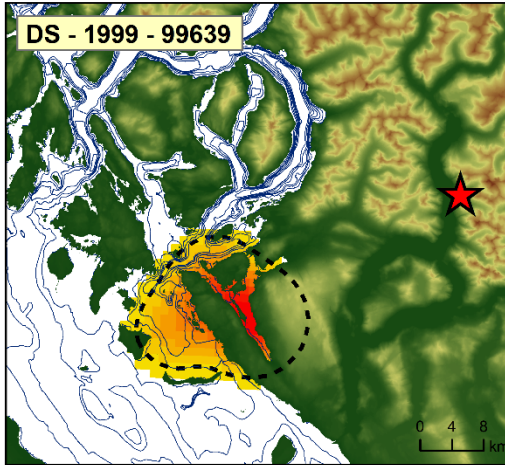
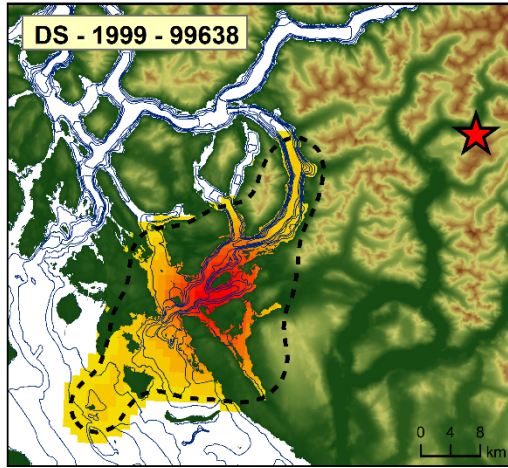
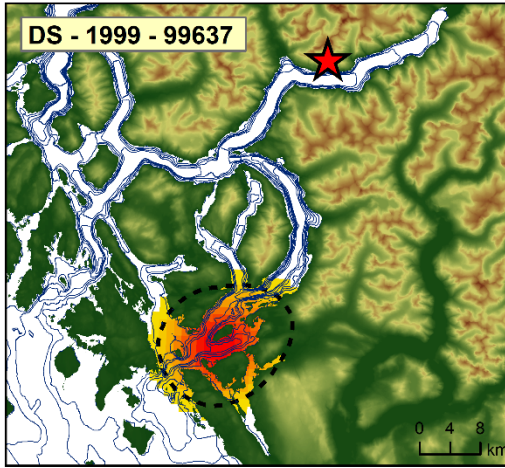
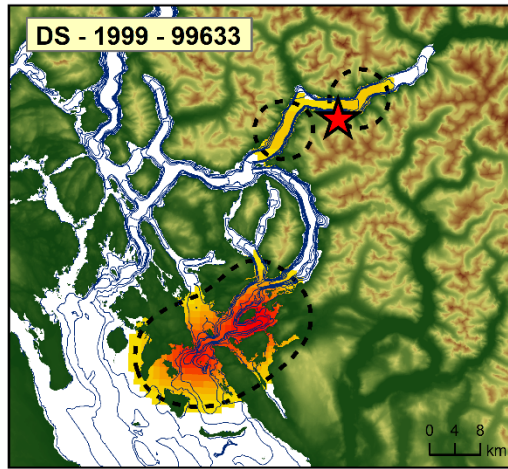
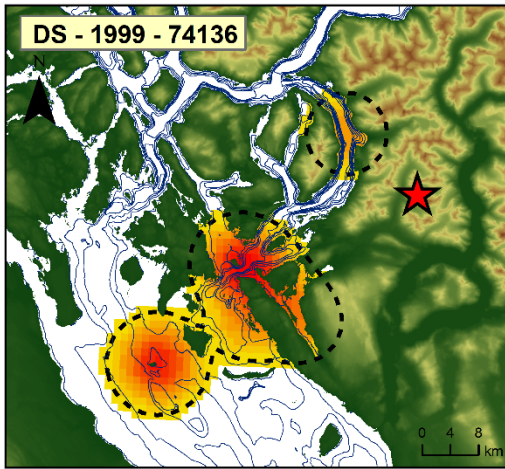
Data source: Centre for Wildlife Ecology, Simon Fraser University. Map created using ESRI ArcMap v10.5.1. Coordinate System: NAD 1983 UTM Zone 10N.





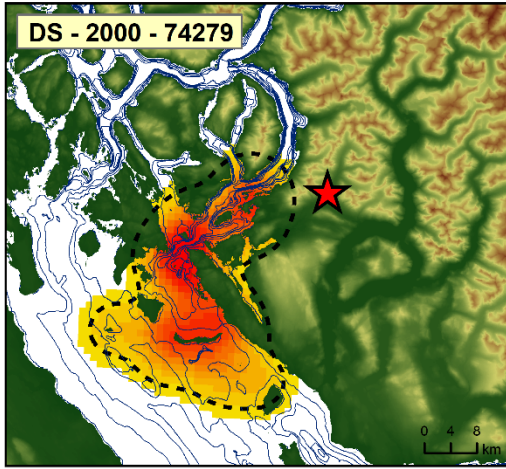
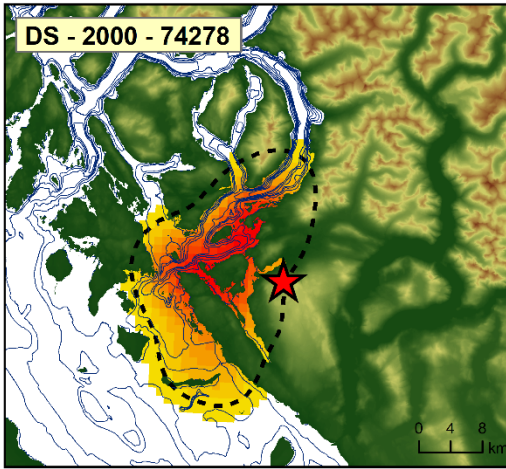
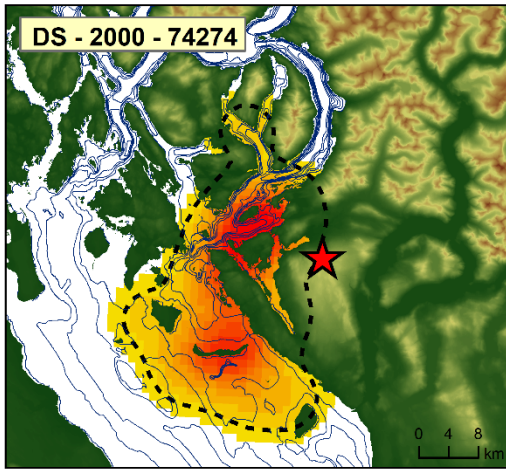
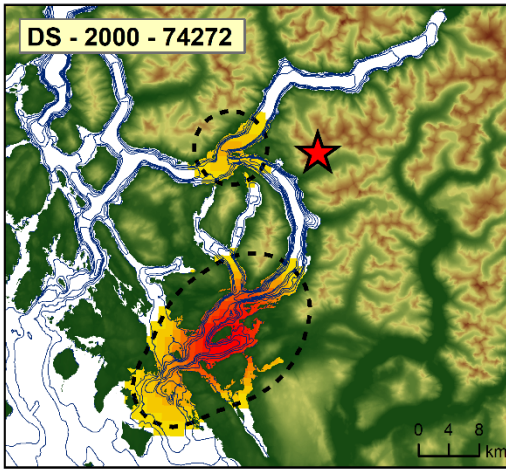
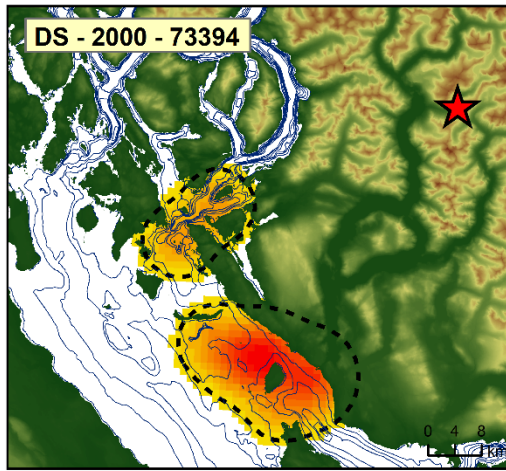
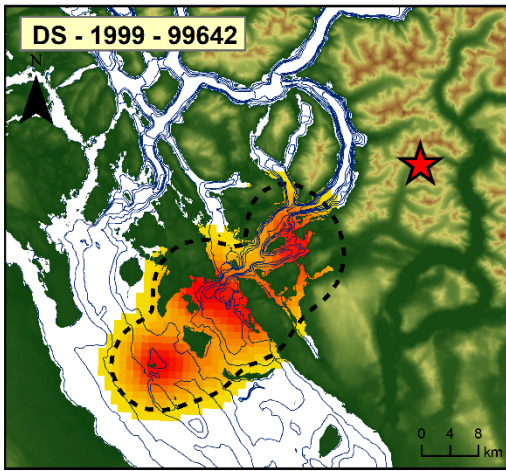
Data source: Centre for Wildlife Ecology, Simon Fraser University. Map created using ESRI ArcMap v10.5.1. Coordinate System: NAD 1983 UTM Zone 10N.





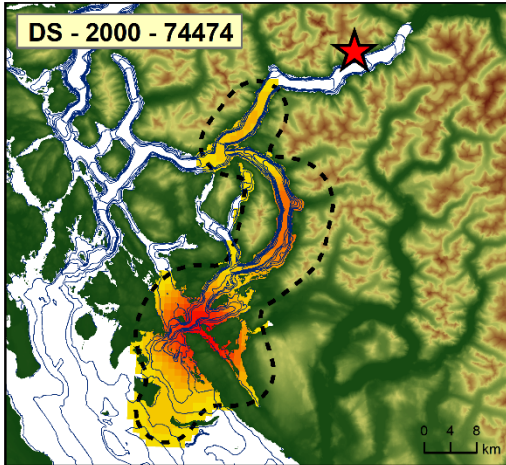
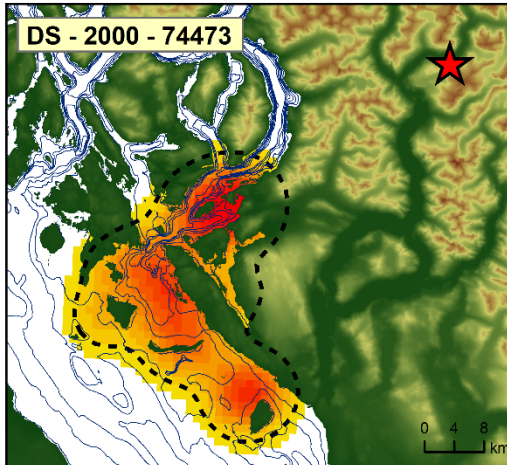
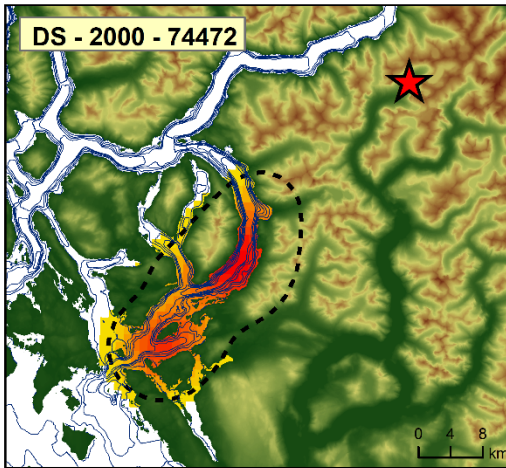
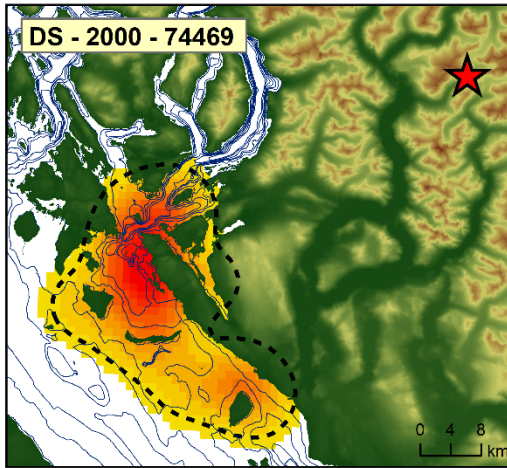
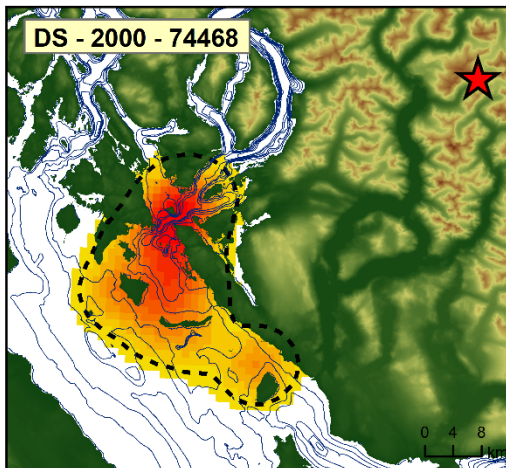
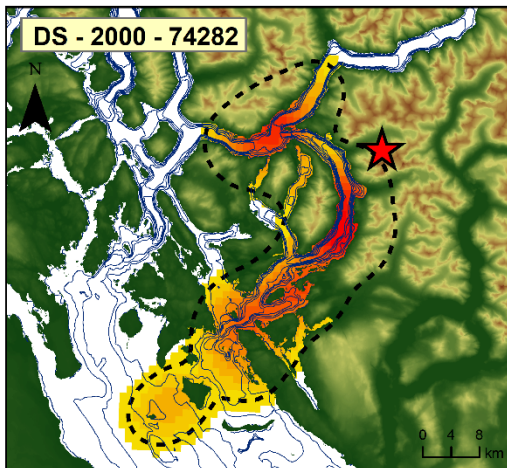
Data source: Centre for Wildlife Ecology, Simon Fraser University. Map created using ESRI ArcMap v10.5.1. Coordinate System: NAD 1983 UTM Zone 10N.





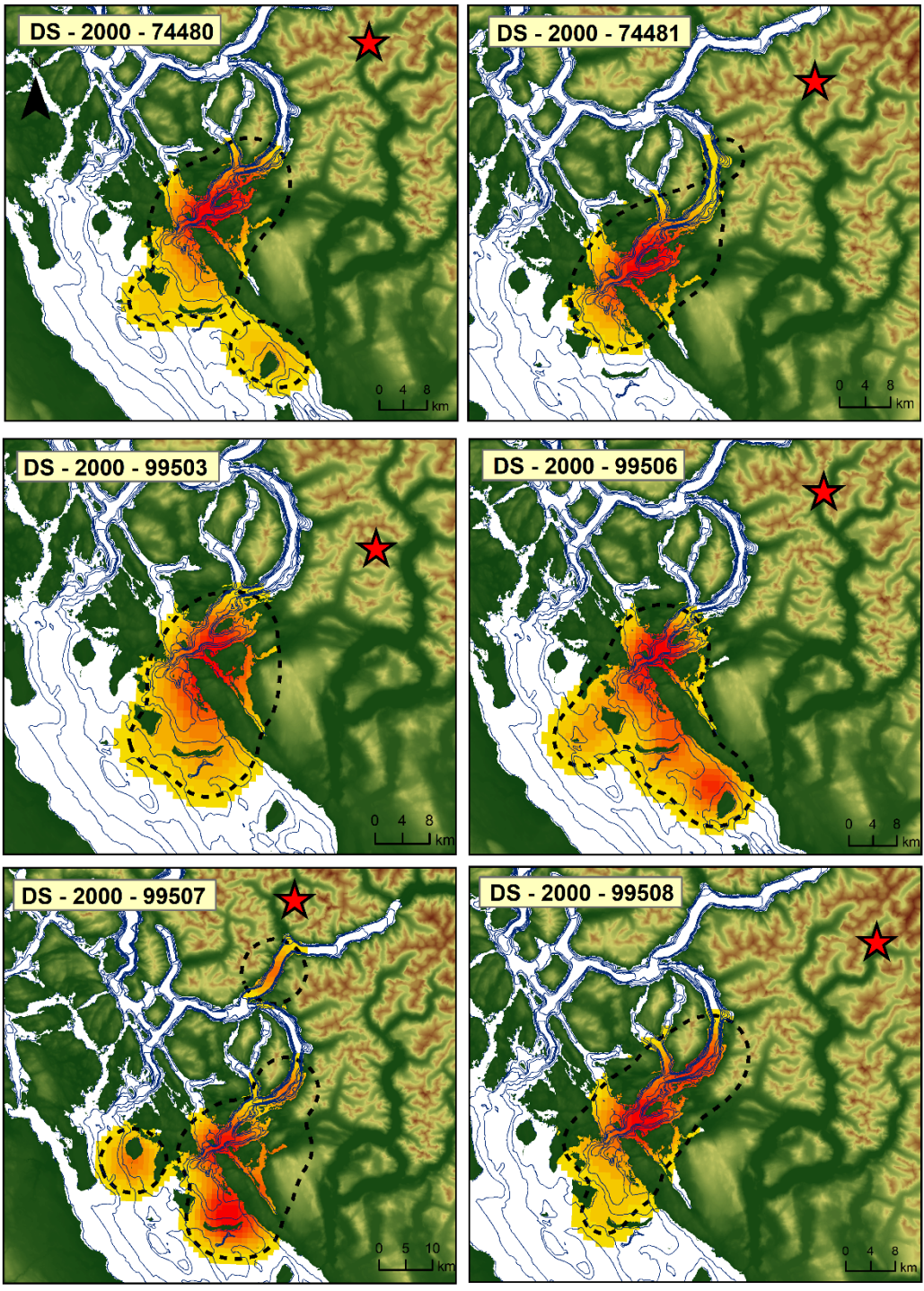
Data source: Centre for Wildlife Ecology, Simon Fraser University. Map created using ESRI ArcMap v10.5.1. Coordinate System: NAD 1983 UTM Zone 10N.





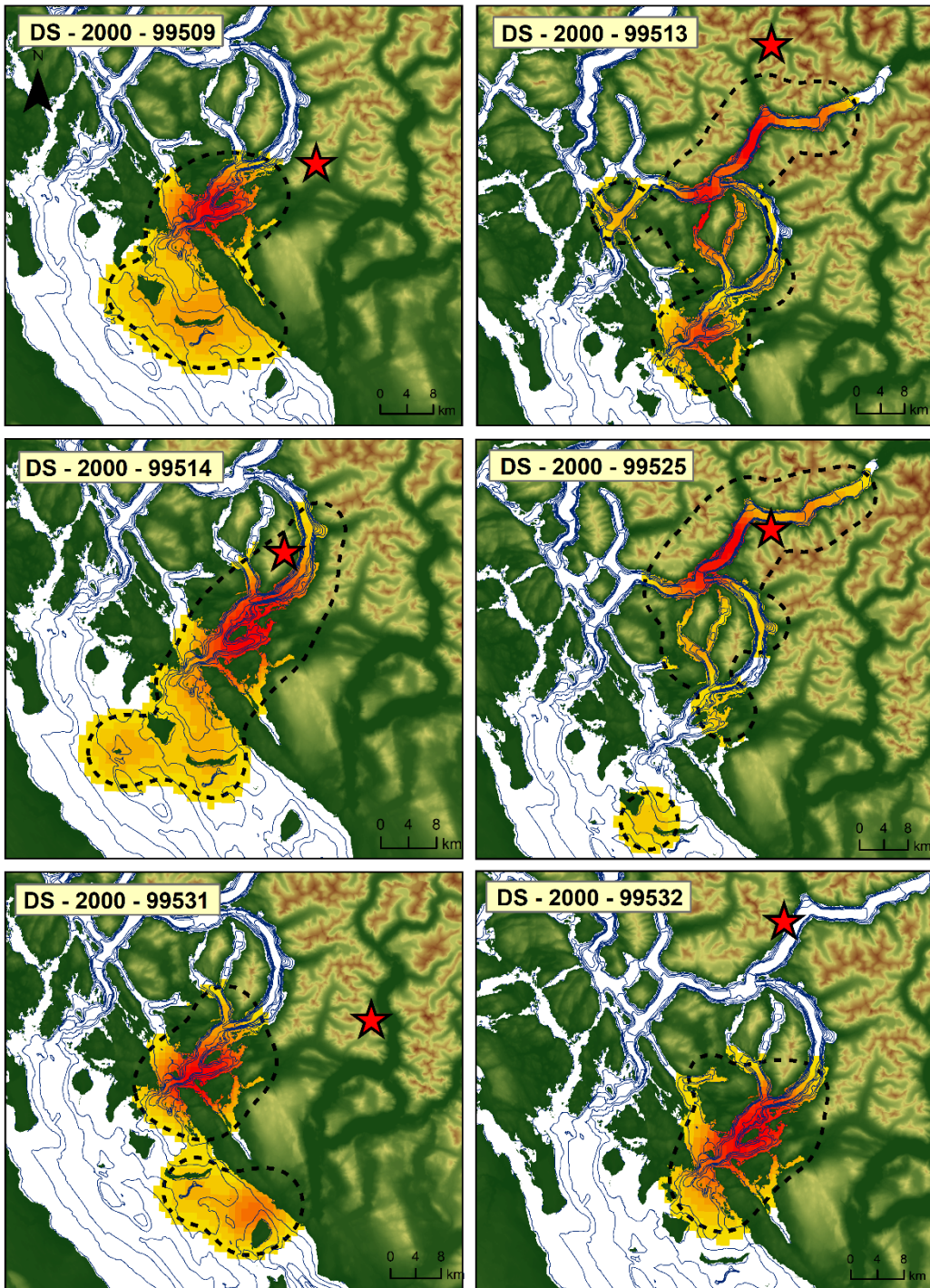
Data source: Centre for Wildlife Ecology, Simon Fraser University. Map created using ESRI ArcMap v10.5.1. Coordinate System: NAD 1983 UTM Zone 10N.





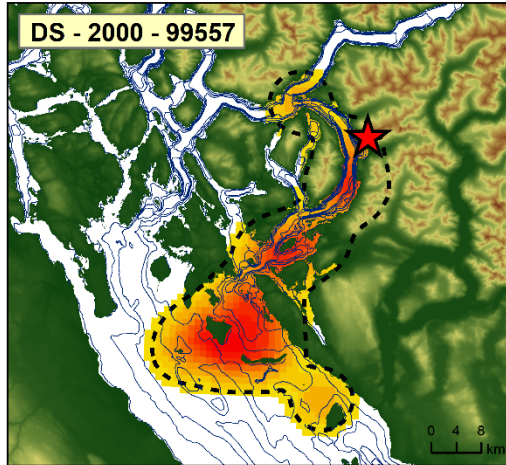
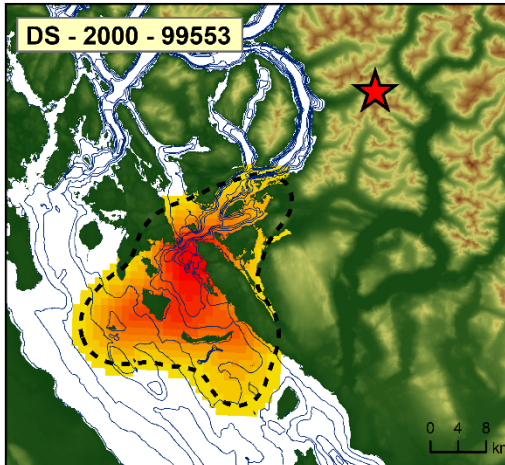
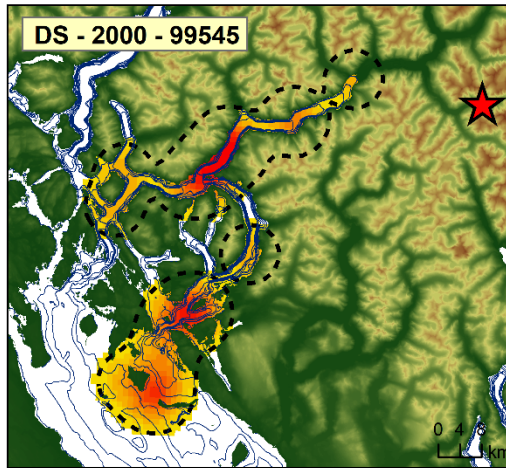
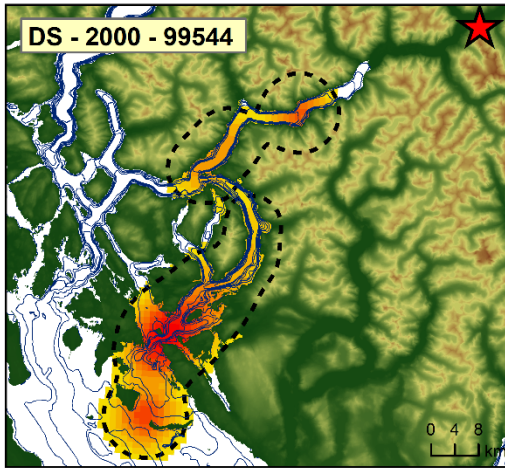
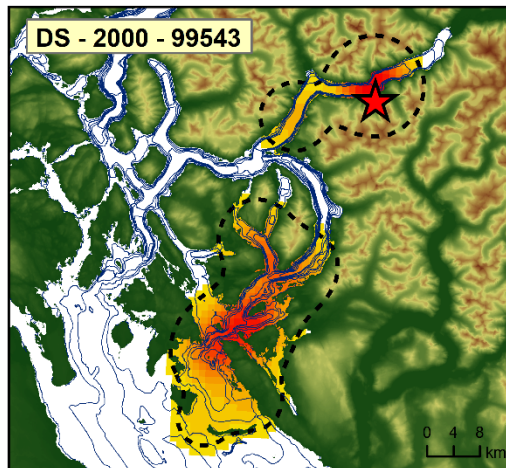
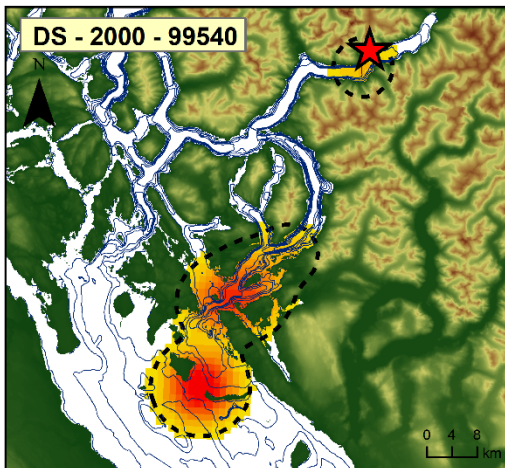
Data source: Centre for Wildlife Ecology, Simon Fraser University. Map created using ESRI ArcMap v10.5.1. Coordinate System: NAD 1983 UTM Zone 10N.





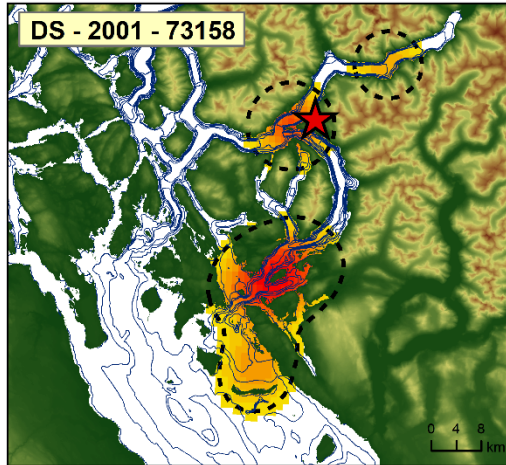
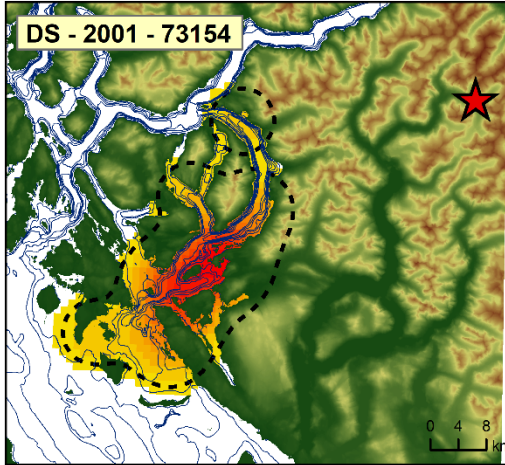
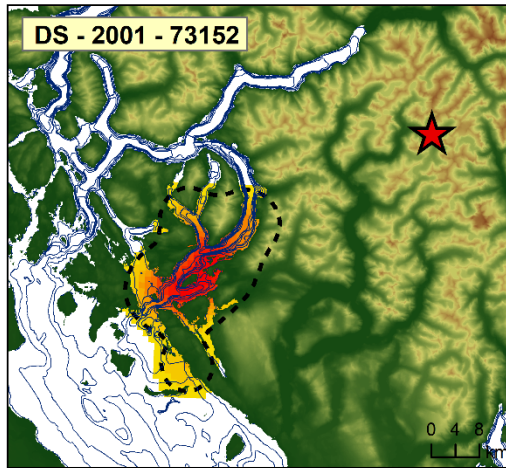
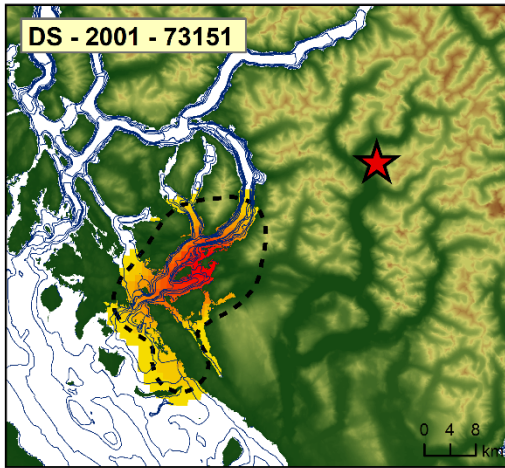
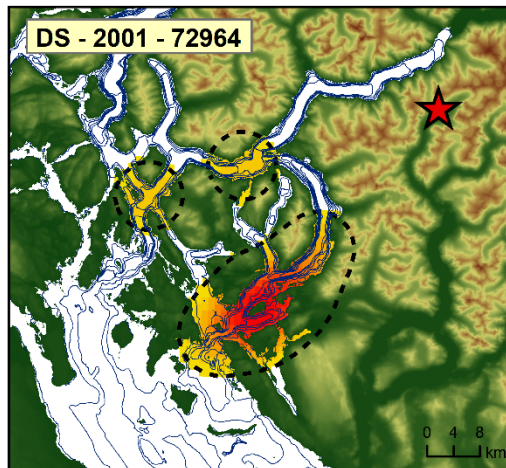
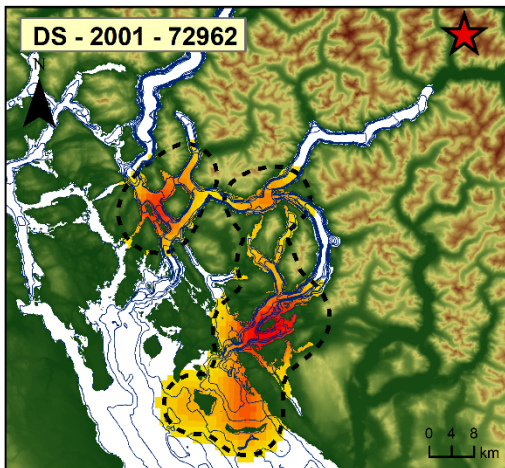
Data source: Centre for Wildlife Ecology, Simon Fraser University. Map created using ESRI ArcMap v10.5.1. Coordinate System: NAD 1983 UTM Zone 10N.





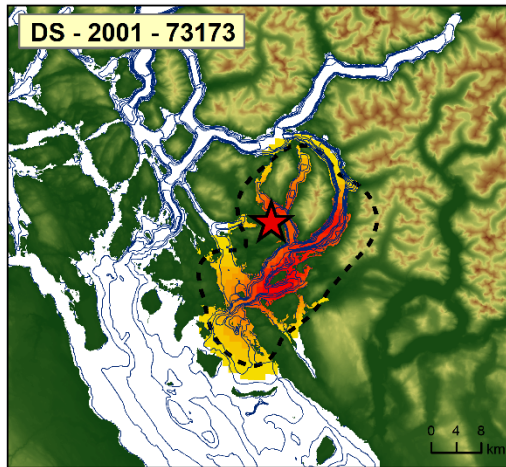
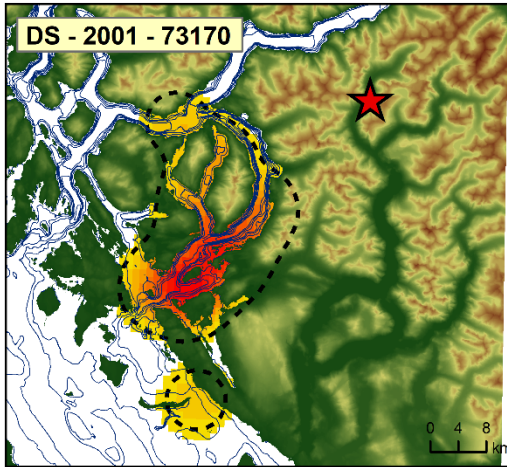
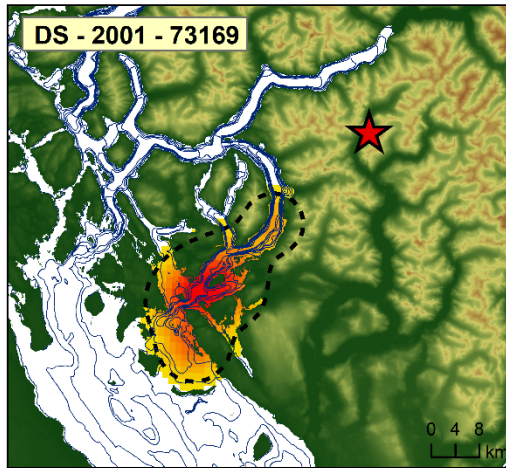
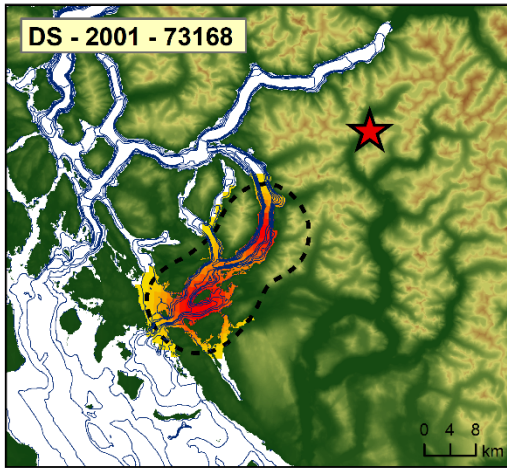
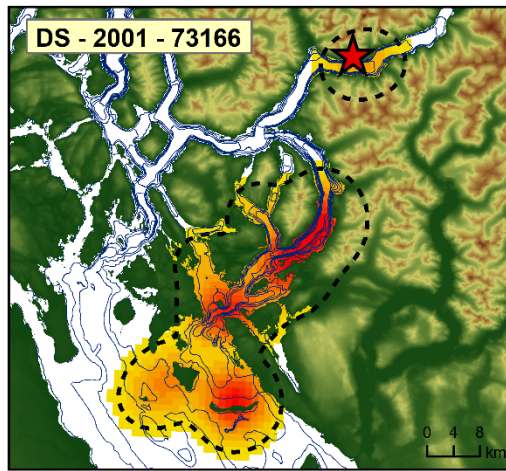
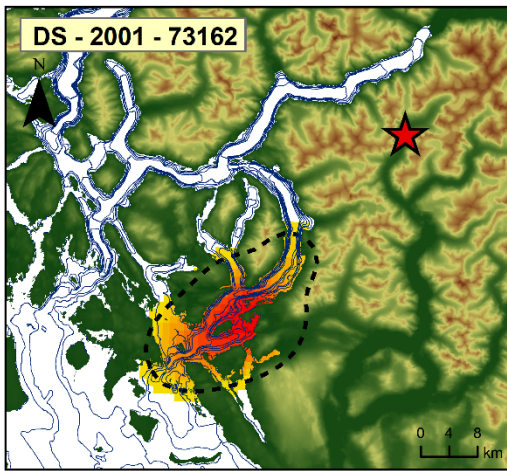
Data source: Centre for Wildlife Ecology, Simon Fraser University. Map created using ESRI ArcMap v10.5.1. Coordinate System: NAD 1983 UTM Zone 10N.





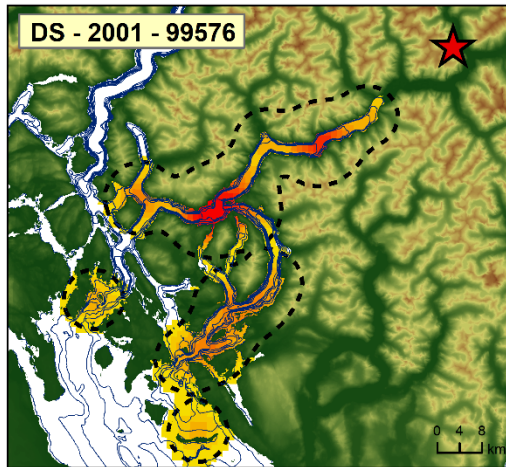
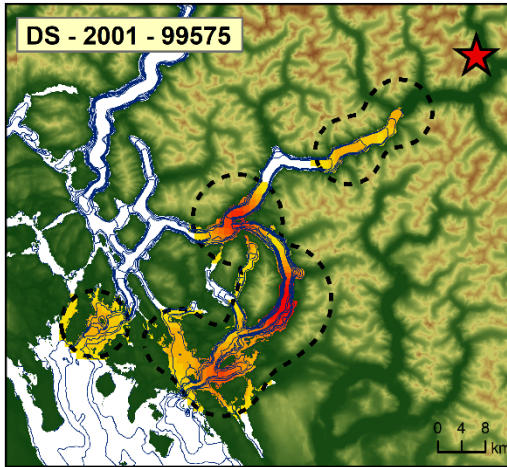
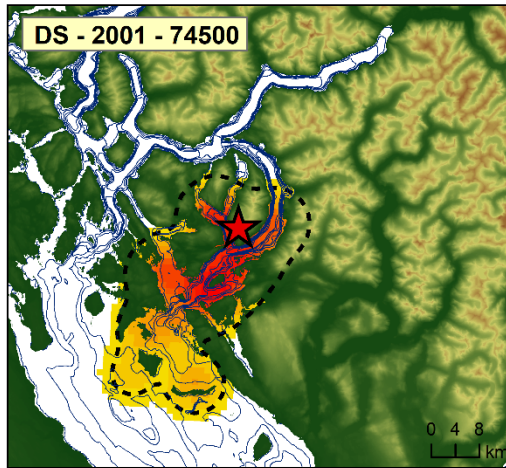
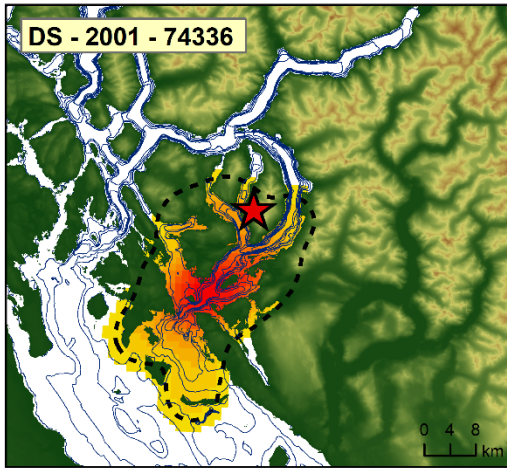
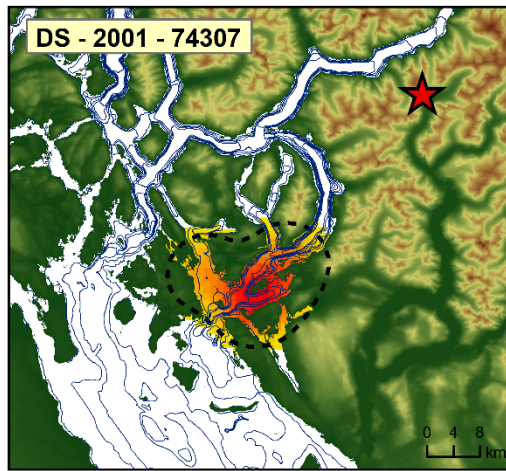
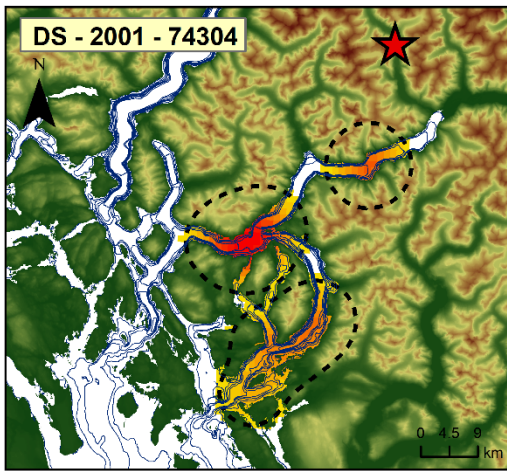
Data source: Centre for Wildlife Ecology, Simon Fraser University. Map created using ESRI ArcMap v10.5.1. Coordinate System: NAD 1983 UTM Zone 10N.





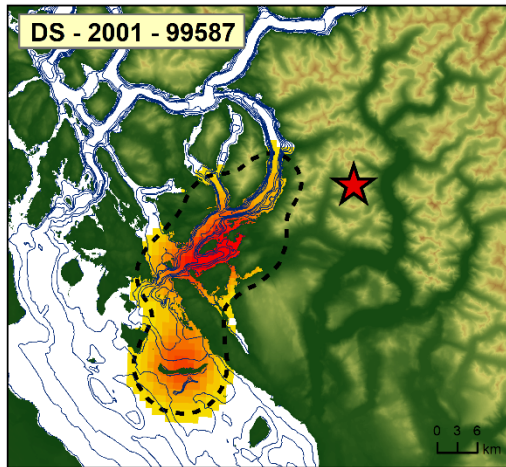
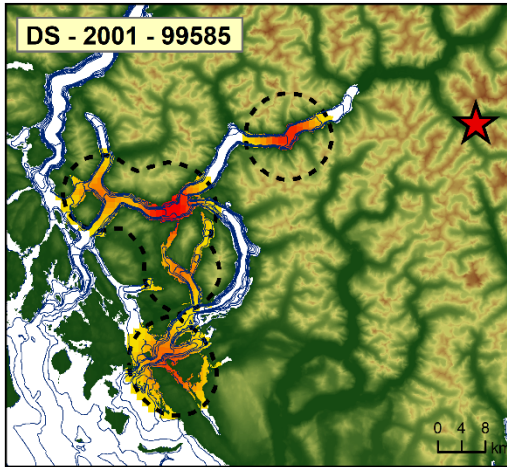
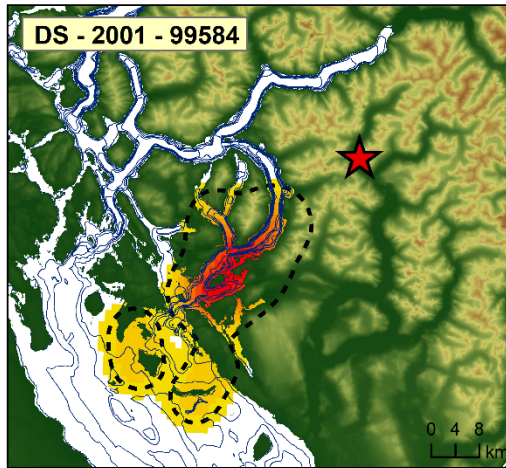
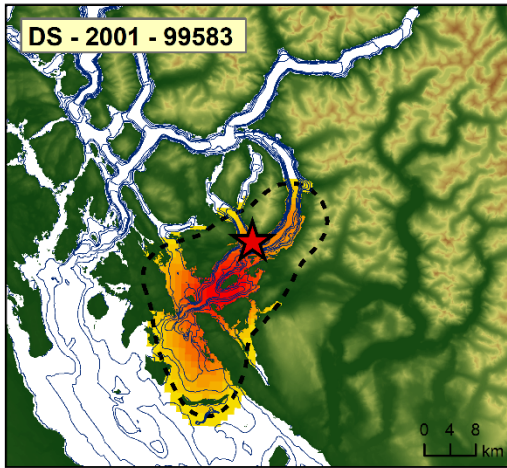
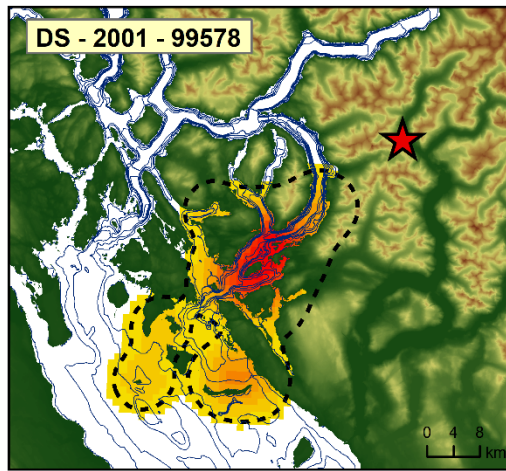
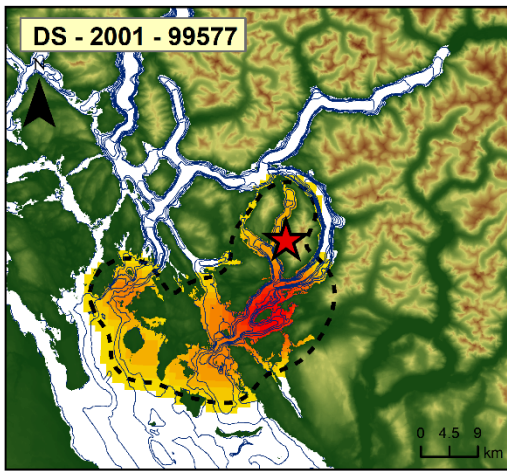
Data source: Centre for Wildlife Ecology, Simon Fraser University. Map created using ESRI ArcMap v10.5.1. Coordinate System: NAD 1983 UTM Zone 10N.





Data source: Centre for Wildlife Ecology, Simon Fraser University. Map created using ESRI ArcMap v10.5.1. Coordinate System: NAD 1983 UTM Zone 10N.





Data source: Centre for Wildlife Ecology, Simon Fraser University. Map created using ESRI ArcMap v10.5.1. Coordinate System: NAD 1983 UTM Zone 10N.



